



KYK Co.,Ltd promises to treat every customer fairly and respectfully with their health and happiness our number one priority.

KYK Co.,Ltd

The head office address / Manufacturing Company
#406~410 Sun-il technopia, 555 Dunchon road, Joongwon-Gu,
Sungnam City, Kyunggi-Do, KOREA

TEL. 82-31-777-3939

FAX. 82-31-777-3456

Made in Korea



KYK

김영귀
한원수

USER MANUAL

Hyd-Hisha

Thank you for Being our Customer!

Dear Customer,

We sincerely appreciate your purchase of KYK alkaline water Ionizer medical substance producer and we hope your health and happiness.

Before operating the product, you must read the user manual carefully.

You can know not only how to use but also the strong points of the product with a manual, use the strong points well to select custom water for various purposes and use it effectively, and, moreover, optimize the performance and life of the product.

All employees of our company promise to think in customer's shoes at all times and be dedicated to the benefits, health, and happiness of the customer.

Thank you.

Sincerely

 **KYK 김영귀 회원수**

President

김영귀

| Table of Contents |

● Special Features	4
● Major Components	5
● Parts and Features	6
● Before installation	7
● Installation	8
● Installation checklist	13
● How to use	14
● When to change the filters	16
● How to change the filters	17
● Summary of Operation Notices	20
● Notices for Safety	20
● Product Specifications	22
● Warranty Registration	23

※Note: This product is a medical substance producer and you should read this manual carefully before operating the product.

Special Features



1. Selection, creation, and flow of custom water for various purposes

①

For beginner and children

②

Normal use for adults

③

Normal use for adults

④

Water to take medicine or drinking water (Purified water)

2. KYK's patented invention of the platinum-coated titanium electrode structure and electrolyzer system

3. Instant Rich Hydrogen Generation

4. High-performance, high-efficiency SMPS power control system with little power loss and low heating

5. Minimized failure and maximized life by the newly-developed cutting-edge modularization system by part of the inner structure

6. Newly-developed control system from detection and control of the amount of filter use to the use period

7. Automatic Hydrogen concentration adjustment system depending on the water flow rate and flow pressure.



Major Components



Body

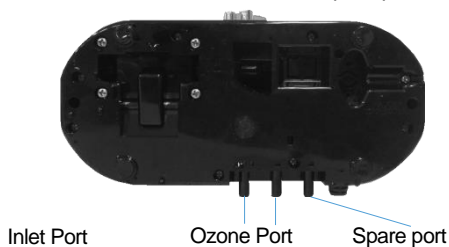
~ **Front**



~ **Back**



Bottom



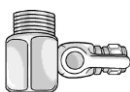
Accessories



User manual



Tubing



Diverter valve



Water Pressure
Regulator



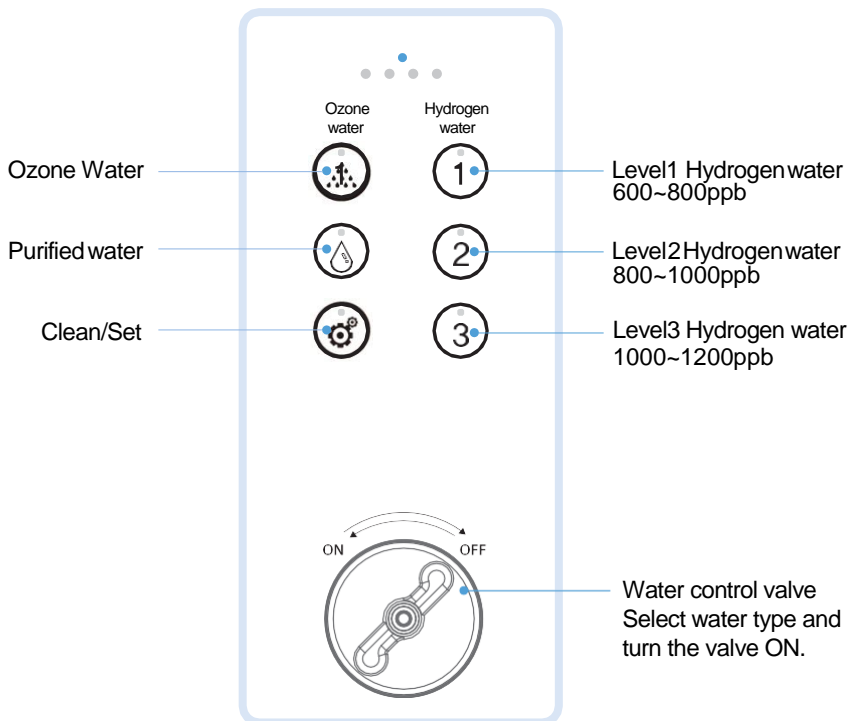
6x8 90°
elbow connectors

Parts and Features



Control Panel

Filter lifespan indicator



Clean/Set

Clean/Set:

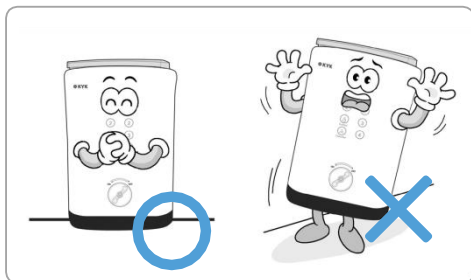
Tap to start cleaning cycle or access settings.

Cleaning starts automatically every 30 liters of continuous use to protect electrolysis chamber.

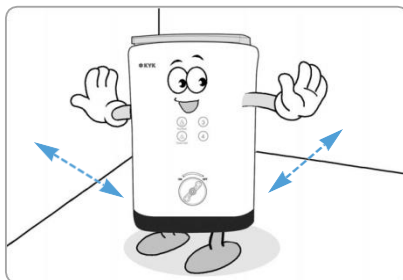
Before installation



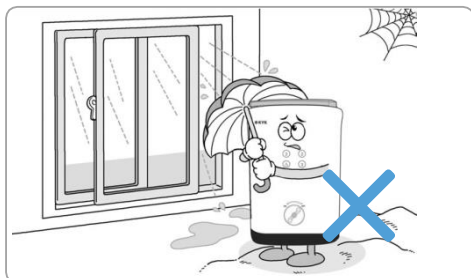
Read the recommendations below before installing the ionizer



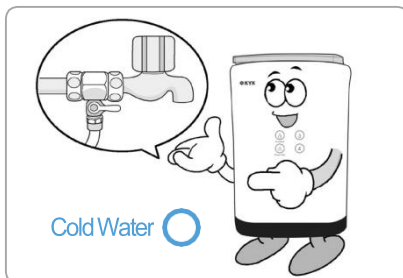
Do not tilt the product



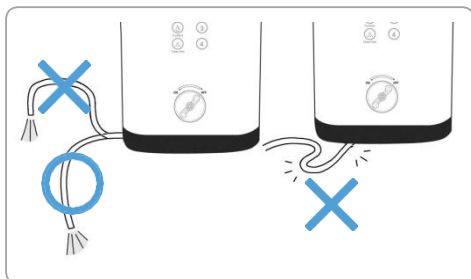
Install the product at least 10 cm away from walls.



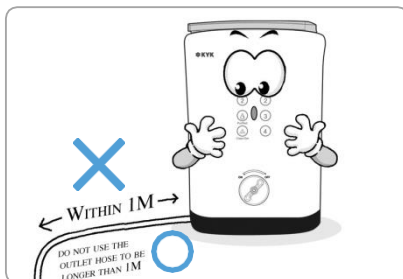
Keep the product in dry places, avoid high moisture areas or direct sunlight.



Connect the ionizer only to cold water supply. Damage resulting from connecting the ionizer to hot water supply is not covered by the warranty.

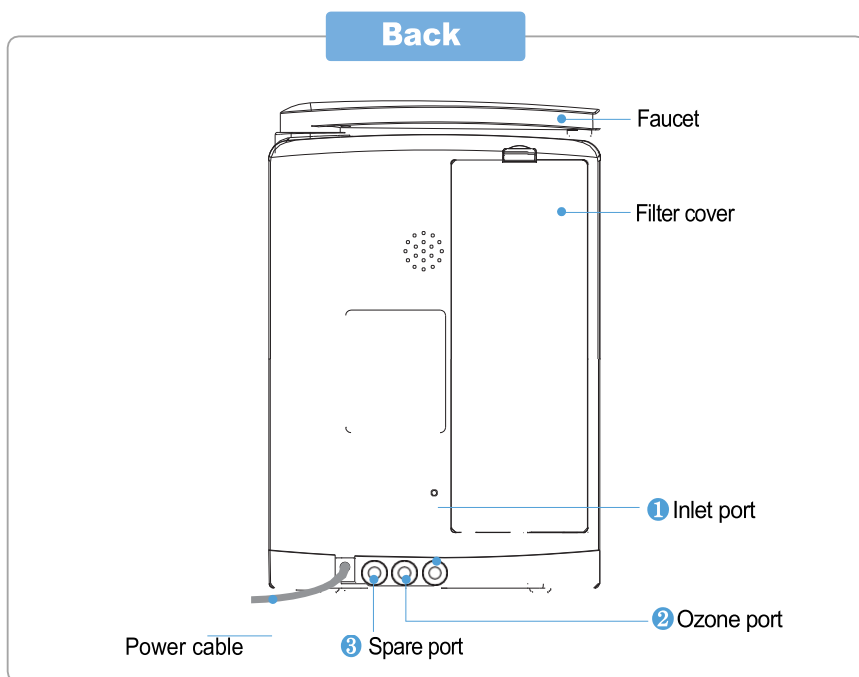


ozone hose must be placed lower than machine without being pressed.

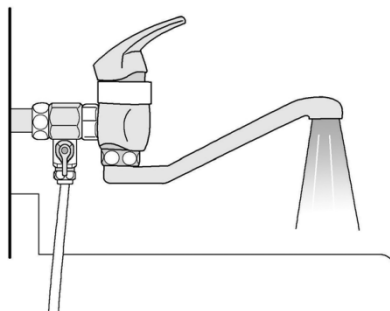
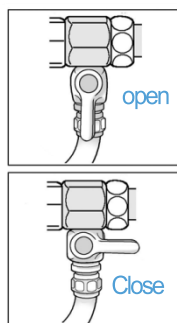


Ozone hose should be shorter than 1M.

Installation



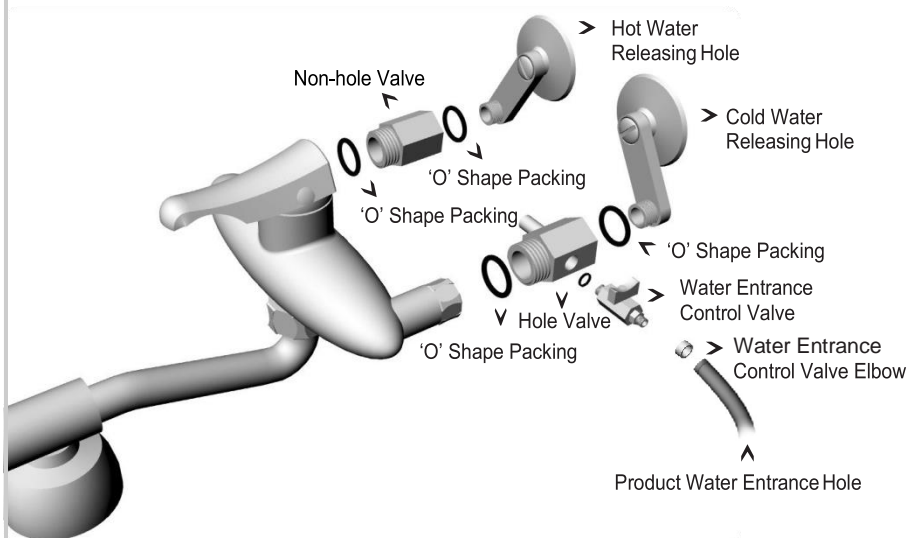
- 1 Lock the tap water; connect the device to cold water supply. The hose included with the device is 6ø:1/4 inch.



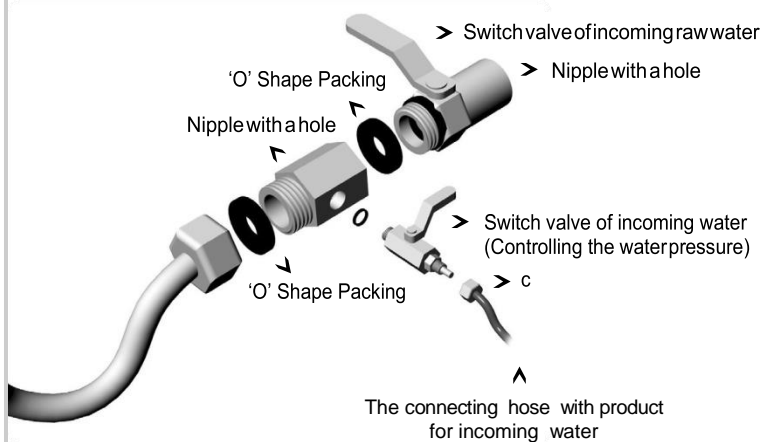
Installation



Installation of separation cool and hot water type



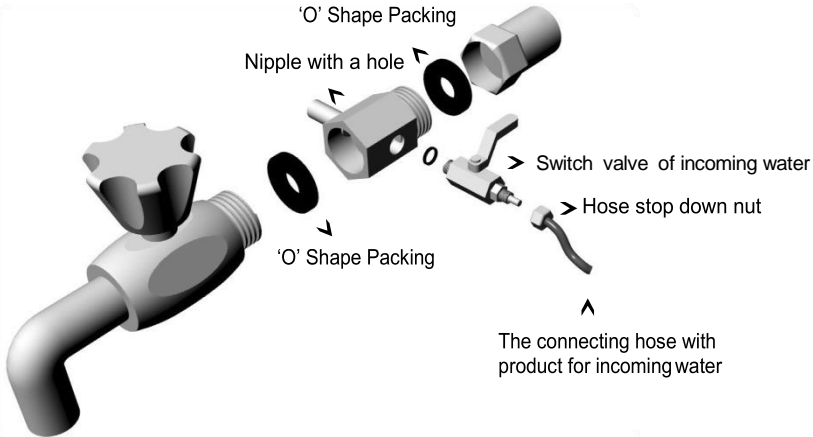
Under sink installation



Installation



General model type installation



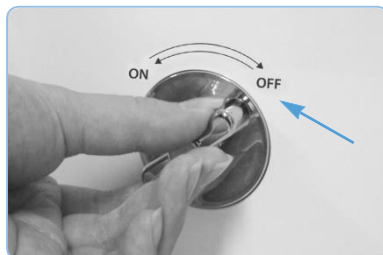
CAUTION

- All hookup part of pipe arrangement has to be covered by teflon tape for avoiding the leakage and you control the bounding number of tape for keeping the level of a horizontality and a perpendicularity.
- When you decompose and reassemble the product, if you give the over force, it will be possible to leak after assembling the product because of a pipe arrangement distortion of raw water, a break out of rubber packing and a breakage.
- If you stop down the nut too strong, the water will be possible to leak because the hose in the hose stop down nut can be torn. Or if you stop down the nut too loose, the water will leak because the hose is missed from the switch valve.
So you connect the hose safely by giving the proper strength carefully.
- If you misconnect hoses between inlet and ozone port, it may not generate hydrogen and cause the main failure. Any failure from this misconnection should be covered by the person who did the installation.

Installation



- 2 Turn off the water control valve before inlet water connection



- 3 Firmly attach 90° elbow fittings to inlet and ozone port on the back of the machine.



- 4 Install the water pressure regulator before the machine and connect plastic hose to fitting on inlet port



CAUTION Inlet, ozone port check

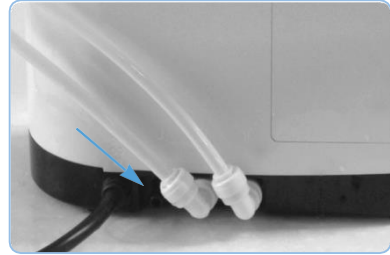
Make sure the plastic hose from your water tap to inlet port and plastic hose for ozone drain to ozone port.

Installation



5

Firmly connect plastic hose to fitting of ozone port



CAUTION

- Make the plastic hose for ozone drain is shorter than 1M. Longer ozone hose may cause difference in hydrogen concentration.
- Place the hose end for ozone port lower than the machine.
- Fit the hose onto the fitting by pushing twice and it will not pulled easily.

6

Open the diverter for water supply and power ON. With audio alarm, machine is ready to be used all LED lighted on for 3 sec. Default setting is Level 2 Hydrogen Water. Leave the machine work for 2 min.



CAUTION

Check the water leakage by running water within before use.



How to use



► Diverter installation may cause pipe particles or rusts. Run the water out to your tap to protect the machine.

How to check the water pressure and set up

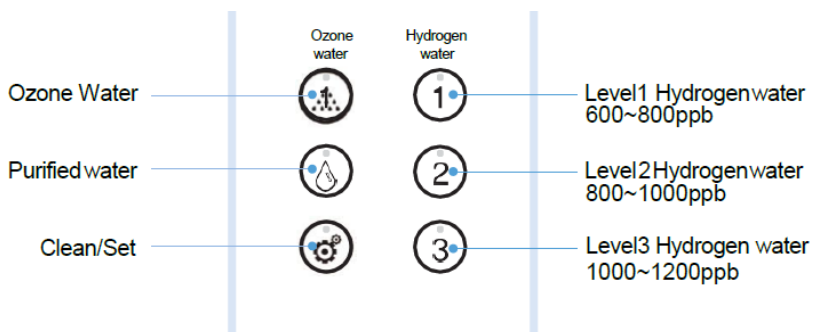
If the water pressure is too low or high, the buzzer will be sounded, when you drain the water. The machine will sound the warning, if the water pressure is lower than 0.5 liter, higher than 3.5 liter. When you install the machine for the first time, turn on the machine with closed water pressure controlling valve, and then slowly open the valve to adjust the water pressure. (The proper water pressure is 1.5~3.0 kgf/cm and water pressure is 0.8 L/min)

- ① With measuring instrument: Check the source water flow rate with a measuring instrument and if it is high, make it low, down to 0.8 ℓ /min, with water pressure regulator.
- ② Without measuring instrument (A simple measuring way):
If you can fill the paper cup (200mL) in 13~14 sec, the water flow rate is 0.7~0.8 ℓ /min for normal operation.

The case that ground water or solid quality of water is used

- If the quality of groundwater is bad, use outer filters.
 - For areas with high limestone in the water, use special filter to remove limestone.
- For hard water, choose appropriate outer filters. Clean the machine by pressing CLEAN button regularly.

Once you touch the button, the LED light will be turned on.

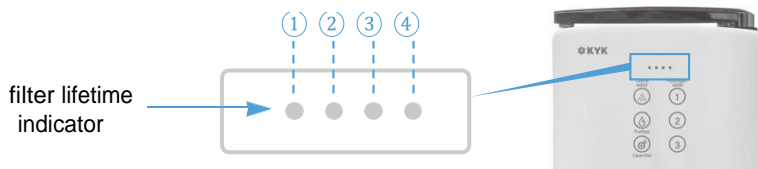


How to operate

1. Place the faucet on the right place for water dispense.
 2. Press the button for operation and open the ON/OFF Valve.

You will see lots of hydrogen in water. Take hydrogen water immediately.
 3. Appropriate water flow rate is 0.7~0.8l/min.
 4. Once you close the ON/OFF valve, water stops.
- Once you start water dispensing, filter lifespan indicator shows you how much filter life left for 3 sec and the light will move to show you it is working.
 - Default setting is Level 2 Hydrogen Water
 - To protect electrolysis cell, after 30 liter generating, it will give you audio alert and go for automatic cleaning for 60 sec.

When to change the filters



■ Filter life time may be different by source water quality.

■ Filter replacement time:

KYK machine shall give you notice once installed filter is expired by capacity and time.

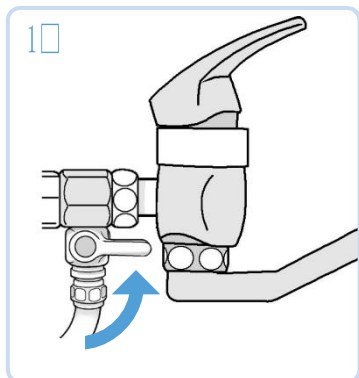
CAUTION

- For bad inlet water, place outer filter before the machine.
- In case of any abnormal scent from the dispensed water, replace filter with new one even the filter is available.
- In case of your filter expires by time, replace your filter for safe use of Hydrogen rich water

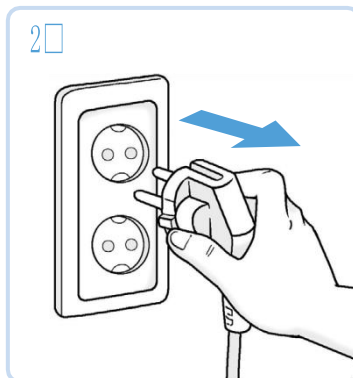
How to change the filters



How to change the filters



Close the diverter



Unplug the machine.

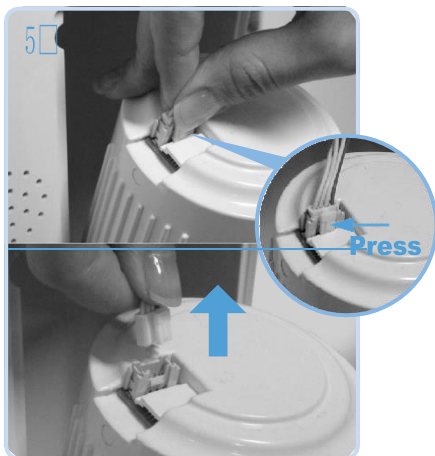


Remove the filter cover.



Pull the filter forward to take it out.

How to change the filters



Pull electric wire out from the filter chip.



Grab the filter and rotate it counter-clock-wise. Pull it out.

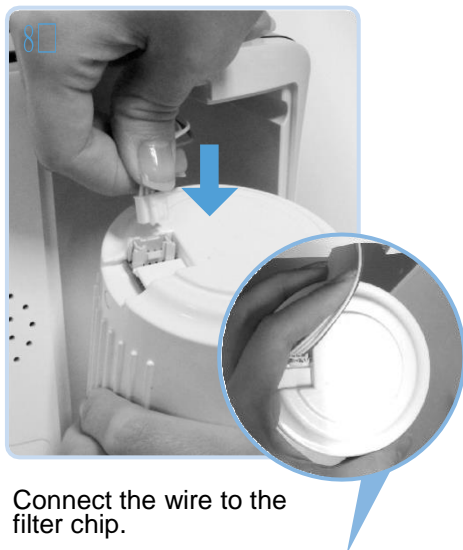


Please remove the safety seal of the new filter. Place it on the filter holder and press. Close it by turning it clock-wise.



Make sure that the rubber ring in the connection between the filter and the main body is not detached or jammed. Failure to do so may cause a leak of water.

How to change the filters



Connect the wire to the filter chip.

Push the filter into the machine.



Close the filter cover. Plug the power in and drain water for 2~3 minutes to remove any particles from the filter..



- Do not use this product for any purpose other than what's described in this manual.
- Do not modify this product intentionally.
- Do not place heavy objects on this product.
- Do not lift this product body holding the stainless steel tube, it will break.
- Always keep the disposal outlet open so water can drain.
- Use AC110V/120V(American type) and AC 220V~240V (European type) with this product.
- Do not use overly contaminated water with this product. Tap water is best.
- If there is a problem with this product, please call your service center.
- Do not use hot water with this product.
- When the filter change signal is displayed, please change the filter as soon as possible.
- When you do not use this product for more than two days, run water through it for 1~2 minutes before using.
- When you use this product for the first time, run water through it for 2~3 minutes.
- When you do not use this product for a long time (over 1 week), please unplug it, remove the filters, and dry it out.
- Be careful when you change a filter not to damage the O-Rings.
- Do not use well water, groundwater, contaminated water and water contained with high amounts of heavy metals.
- Do not use water hotter than 35°C to protect the machine. Room temperature water is the best.
- Do not supply unit with ionized water.
- Do not use alcohol to clean and wash the machine. (Only use a gentle soap)
- Change the filter regularly.
- Do not take this product apart.
- Do not shock or shake the unit.

Notices for safety



To avoid electric shock, leak and/or fire.

- This product must only use AC110V/120V(American type) and AC 220V~240V (European type) .
- Keep the electrical plug free of dust and dirt.
- If the electrical plug is broken, do not use the KYK Product.
- Do not connect too many electrical plugs to one power supply.
- Dry your hands before inserting or removing the electrical plug.
- Do not bend or pull the electrical plug with too much strength.
- Do not take apart or repair the KYK Product without certification.



To avoid problems and failures of the KYK product.

- Do not expose the KYK Product to highly moisturized environments such as rain, your bathroom, or your shower.
- Do not place heavy objects on the KYK Product.
- Install the KYK Product on a solid and horizontal countertop or shelf.
- Only use cold water with the KYK Product.
- Do not move the KYK Product while it is operating.
- Do not shock the KYK Product.



To avoidleakage

- Do not twist or bend the water supply hose.



To avoid staining and peeling.

- Do not use thinner, benzene, or wax when you clean the KYK Product.



To avoid distortion of the KYK Product exterior.

- Keep out of direct sunlight or heat.



To avoid impure water and malfunctioning of the KYK product.

- Be sure to only supply clean, quality water to the KYK Product. Do not hook up directly to a well, lake, river, etc.



Product Specifications



Manufacturer Approval Code		2213	Product Approval Code		15-297
Product Name		Hydrogen Rich Water Generator / Hyd-HISHA			
Manufacturing Company		KYK Co.,Ltd (#406~410 Sun-il technopia, 555 Dunchon road, Joongwon-Gu,			
Manufacturing No. and Date		See Backside of Product			
The object of Product		It is a device to produce Hydrogen Rich Water with concentration 600~1200ppb. Hydrogen is strong anti-oxidant..			
Voltage and Frequency		AC220V, 60Hz	Power Consumption		150VA
Dimension and Weight		220(W) X 322(H) X 100(D) mm / 2.4kg			
Water Connection		Standing or wall-mounted. Direct connection to tap water.			
Source Water Temperature		5°C~35°C	Available Water Pressure		3.0kgf/cm ²
Electrolysis		Continuous electrolysis			
Displayed Contents		Displays levels, water purification, filter life			
Electrolysis	Performance Output	Hydrogen Rich Water 0.7~0.8ℓ/min (±10%)			
	Water Type	3 levels of hydrogen water, 1 purified and 1 ozone water			
	Electrolysis Cell				
	Electrode Cleaning				
Filter	Estimated filter life	3,000 liters (may differ region to region, nation to nation)			
	Filter change indication	① When the light of Filter Life LED begin to blink once			
		② Once there is any change in water taste and scent, change filter at any time.			
		③ Filter expires by time and capacity, which comes first.			
	Filtering Material	④ Use KYK genuine filter only. KYK is not responsible for any damage caused by faked filter use and user's mis-use.			
		Composite filter	Notification	Filter Change (see the user	
Power Source Protector		Fuse			
Over-current Detector		Automatically stops the output of electrolytic cells			
Over-temperature Protector		Temperature detector circuit installed inside SMPS power supply automatically			



Warranty Registration



Terms of Warranty	one year parts and labor.	Purchase Date	
Customer's	Address		
	Name		
	Phone No		
Seller	Representative		
	Name		
	Phone No		

1. Our company will pay for repair, labor and shipping for one year guarantee performance and operations. If repair of the produce is not possible, we will replace the product.

2. Customer will pay for repair charges including shipping under the following conditions:

- (1) A malfunction occurs after the warranty has expired.
- (2) The unit is damaged by the customer.
- (3) Damage is caused by customer attempting to repair the unit themselves or the unit is repaired by an unauthorized service center.
- (4) Damage is caused by using the incorrect electrical voltage.
- (5) Damage is caused by using an imitation filter.
- (6) Damage is caused by a natural disaster.
- (7) Damage is caused by exposing the electronics to water or moisture.

KYK